



Saturday, November 16, 2024 8:00 a.m.–3:00 p.m. Virtual Program

Massachusetts Psychiatric Society's 2024 Psychotherapy Conference

The MPS Psychotherapy Committee is pleased to present
Current Trends in Psychotherapy

Program Overview

This conference will feature presentations about several current trends in psychotherapy training and practice, with an emphasis on the treatment psychiatrists provide. Participants will learn about an innovative integrative psychotherapy curriculum that teaches psychiatrists and psychiatric trainees how to use psychotherapeutic understanding and skills to

enhance patient care. Clinically focused talks will demonstrate the advantages, disadvantages and indications for psychedelic-assisted psychotherapy, showcase a new approach to therapeutic dilemmas with suicidal youth and young adults, and educate attendees about addressing social determinants of mental health in an urban community.

Learning Objectives

At the conclusion of this activity, learners will be able to:

- Use or be familiar with a new integrative psychotherapy curriculum to increase psychiatrists' competence in developing therapeutic relationships.
- Discuss with patients the pros and cons of psychotherapy with psychedelics
- Learn about a psychotherapeutic model of treatment for youth and young adults at high risk of suicide
- Increase awareness of how to address the mental health needs of an urban community

[CLICK TO REGISTER ONLINE](#)

Accreditation Statement

The Massachusetts Psychiatric Society is accredited by the Massachusetts Medical Society to provide continuing medical education for physicians.

AMA Credit Designation Statement

The Massachusetts Psychiatric Society designates this live activity for a maximum of 6.0 *AMA PRA Category 1 Credits™*. Physicians should claim only the credit commensurate with the extent of their participation in the activity.

REGISTRATION FEE

MPS/APA/MMS MEMBER	\$150
RESIDENT/FELLOW	\$15
NON-MEMBER	\$175
MEDICAL STUDENT	\$0

Questions?

Call (781) 237-8100, 8 a.m.–4 p.m. Monday thru Friday

Please note the link for the conference will be sent on November 15.



Faculty



Robert J. Gregory, MD

Professor of Psychiatry, SUNY Upstate Medical University

Founding Director, Psychiatry High Risk Program

Developer, Dynamic Deconstructive Psychotherapy



Stephen McDermott, MD

Founding Director, Cognitive Therapy & Research Program and Cognitive Therapy Institute, Massachusetts General Hospital

*Psychotherapy Chair, AGLP: The Association of LGBTQ+ Psychiatrists
Co-Chair, Psychotherapy Committee, Massachusetts Psychiatric Society*



Roberta Isberg, MD

Assistant Professor of Psychiatry, Part-time, Harvard Medical School

Senior Attending Psychiatrist, Department of Psychiatry and Behavioral Sciences, Boston Children's Hospital



Kevin M. Simon, MD, MPH

Chief Behavioral Health Officer, Boston Public Health Commission

*Child, Adolescent and Adult Psychiatrist and Addiction Medicine Specialist, Boston Children's Hospital
Assistant Professor of Psychiatry, Harvard Medical School*



Harold Kudler, MD, DLFAPA

Associate Consulting Professor, Department of Psychiatry and Behavioral Sciences, Duke University School of Medicine

Adjunct Professor of Psychiatry, Uniformed Services University of the Health Sciences

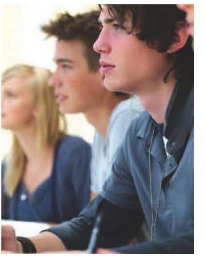


Margaret C. Tuttle, MD

*Co-chair, Psychotherapy Committee, Massachusetts Psychiatric Society
Instructor in Psychiatry, Harvard Medical School*

Psychiatrist, Massachusetts General Hospital (Somatic Symptom Disorder and Functional Neurological Disorder)

Co-leader of Training Advancement Initiative, APA Psychotherapy Caucus



Program Schedule

- 8:15-8:30 a.m.** **Welcome and Introduction**
- 8:30-9:45 a.m.** **Teaching Psychotherapy with an Integrative Curriculum**
Roberta Isberg, MD
- 9:45-11:00 a.m.** **Trauma and Trance: From Shamanism to Psychedelic-Assisted Psychotherapy**
Harold Kudler, MD, DLFAPA
- 11:00-11:30 a.m.** **Moderated Panel Discussion**
(morning speakers and any afternoon speakers who are present)
Moderators: Stephen P. McDermott, MD and Margaret C. Tuttle, MD
- 11:30-12:00 p.m.** **LUNCH BREAK**
- 12:00-1:15 p.m.** **Therapeutic Dilemmas with Suicidal Youth and Young Adults: A Recovery-Based Perspective**
Robert J. Gregory, MD
- 1:15-2:30 p.m.** **Addressing Social Determinants of Mental Health in an Urban Community**
Kevin M. Simon, MD, MPH
- 2:30-3:00 p.m.** **Moderated Panel**
(all afternoon speakers and any morning speakers who have stayed)
Moderators: Stephen P. McDermott, MD and Margaret C. Tuttle, MD
- 3:00 p.m.** **Adjourn**